



Munno Para

PRIMARY SCHOOL

Respect, Responsibility, Success

NEWSLETTER ISSUE 3
Term 1, Week 10 2018

"Even the wisest mind has something yet to learn."
- George Santayana

Hello to Everyone,

Dear Parents and Carers,

The end of a very busy and exciting term is drawing near. School finishes on **Friday 13th September at 2pm**, with our **Sports Day**. We had trialled this last year and it was extremely successful. Our Sports Captains have been named and are ready to provide the necessary encouragement and support for their teams. The day starts off with the group activities, which encourages participation for all students and builds team cohesion and group work with students from all year levels helping out. The **mini Sports Day** will be on Wednesday 11th April. A program will be sent out this week. Mini Sports Day involves students that have been selected in PE lessons across the school. Ms Heading and Mr Decelis have practice and trials in their lessons, before selecting the top students to participate. Points are accumulated for year level champions which does include the sprint races on our whole school Sports Day.

I was thankful for the time to spend with family and friends over the Easter weekend. In our very busy and hectic lives, it is sometimes easy to neglect the most important people in our lives. It was also nice to sleep in and not hear the alarm in the morning and not to have to worry about school uniform and lunches. Being a parent is a tough job and one of the most important jobs we have. To be able to spend time together and enjoy each other's company without the stress of getting up early and getting ready, was indeed a luxury.

Our **assembly** last week was an introduction to our revamp of assemblies. The school captains will organise and manage these, along with time and support from Mr Hunter. This is an opportunity for them to further develop their leadership skills and to build their confidence for presentations. We thank them for taking this on.

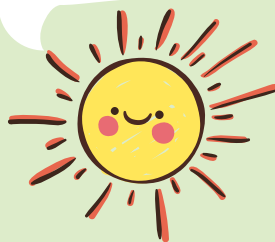
Sandra Watherston will continue to work in the **canteen** in Term 2. There have been a number of positive comments from staff, families and students in regards to the presentation of the canteen. This is a great acknowledgment for the time and effort that she has put in.

Ms Boberic and Glenice have been working with our **ATSI** children and next week they will begin work on a Munno Para PS Welcome to Country. We want to build our young people's sense of belonging and have worked on an idea for our school. It is very exciting.

NAPLAN will be Tuesday 15th May to Thursday 17th May with Friday being a catch up day. There are 100 schools that will be doing their testing online as NAPLAN moves online. This means NAPLAN will move from the current paper and pencil tests to computer-based assessments. Online testing will provide better assessment, more precise results and faster turnaround of information to help schools tailor teaching and learning to student needs. Schools will participate in school readiness activities in the year prior to moving to online testing. These activities will make sure schools are prepared to run online testing. In May of every year, students in Years 3, 5, 7 and 9 take part in the National Assessment Program – Literacy and Numeracy (NAPLAN). NAPLAN was first introduced in 2008 and has become a routine part of the school calendar in Australia. NAPLAN, which is a part of the National

Continued over...

HELLO!



Diary Dates

Wednesday 11th April
Mini Sports Day

Friday 13th April
Sports Day

Early dismissal 2pm

Last day of Term 1

Monday 30th April
First day of Term 2

Tuesday 15th - Thursday 17th
May (Friday 18th catch up day)
NAPLAN (Years 3, 5 and 7)



Friday 13th
April: Sports
Day - 2pm
Dismissal

BREAKFAST
CLUB

Breakfast Club runs
daily in the Art room
8:15-8:45am - all
students welcome



Government of South Australia
Department for Education

Maltarra Road, Munno Para SA 5115
Ph: 8254 8322 Fax: 8254 9231
Email: dl.1482_info@schools.sa.edu.au
www.munnoparaps.sa.edu.au

Principal's Message (continued)

Assessment Program (NAP), is how governments, education authorities and schools can determine whether young Australians are reaching important educational goals.

- NAPLAN helps parents, carers and educators to see if children are meeting important numeracy and literacy standards. It is used to support school improvement processes by enabling teachers to monitor their students' progress over time and to identify areas of strength and development.
- NAPLAN provides parents and carers with an individual report, showing their child's results and a national comparison of their child's performance against other Australian students in their year level.

We encourage all of our students to participate in NAPLAN. If parents/carers do not want their child to participate, please complete the necessary withdrawal form from the front office. This will need to be completed by the end of Week 1 Term 2, and not during NAPLAN week.

The 3-yearly Australian Early Development Census (AEDC) will be conducted in 2018. Teachers will complete an online data collection for all children in reception to provide a snapshot of development in:

- physical health and wellbeing
- social competence
- emotional maturity
- language and cognitive skills
- communication skills and general knowledge.

Students in Years 4 to 9 will participate in the **Student Well Being survey** in Term 3. They will be asked about how they think and feel about their experiences both inside and outside of school. This is part of the annual wellbeing and engagement collection which includes 68 questions about wellbeing, health and academic achievement.

We are currently updating our **information brochure** and will ensure a copy is sent home to all families. This will provide a lot of general information in one booklet.

Term 2 will be the start of the cooler weather. **School jumpers** can be purchased from the front office. The school colours of black, green and gold are to be worn for all jumpers and tops with black jeans and pants.

Thank you,
MPPS staff



NAPLAN on paper – information for parents and carers

NAPLAN
NATIONAL ASSESSMENT PROGRAM
Literacy and Numeracy

2018

Why do students do NAPLAN tests?

The National Assessment Program – Literacy and Numeracy (NAPLAN) assesses literacy and numeracy skills that are essential for every child to progress through school and life.

Students in Years 3, 5, 7 and 9 participate in the annual NAPLAN tests in reading, writing, language conventions (spelling, grammar and punctuation) and numeracy.

The tests provide parents and schools with an understanding of how individual students are performing at the time of the tests. NAPLAN tests are just one aspect of a school's assessment and reporting process; they do not replace ongoing assessments made by teachers about student performance.

NAPLAN tests also provide schools, education authorities and governments with information about how education programs are working and whether young Australians are meeting important educational outcomes in literacy and numeracy.

What will be tested?

NAPLAN assesses literacy and numeracy skills that students are learning through their regular school curriculum. All government and non-government education authorities have contributed to the development of NAPLAN materials.

To give you an idea of what the tests look like, see example questions at nap.edu.au/naplanexample

How can I help my child prepare for NAPLAN?

Help your child prepare for NAPLAN by reassuring them that the tests are just one part of their school program, and by reminding them on the day to simply try their best. Teachers will ensure students are familiar with the types of questions in the tests and will provide appropriate support and guidance.

What if my child is absent from school on test days?

Where possible, schools may arrange for individual students who are absent at the time of testing to complete missed tests at another time during the testing week. Individual students are not permitted to sit tests after Friday 18 May 2018.

NAPLAN 2018 tests timetable

	Tuesday 15 May	Wednesday 16 May	Thursday 17 May
Year 3	language conventions 40 minutes writing 40 minutes	reading 45 minutes	numeracy 45 minutes
Year 5	language conventions 40 minutes writing 40 minutes	reading 50 minutes	numeracy 50 minutes
Year 7	language conventions 45 minutes writing 40 minutes	reading 65 minutes	numeracy 60 minutes
Year 9	language conventions 45 minutes writing 40 minutes	reading 65 minutes	numeracy 60 minutes

How is my child's performance measured?

Individual student performance is shown on a national achievement scale for each test. A result at the national minimum standard indicates that the student has demonstrated the basic literacy and numeracy skills needed to participate fully in that year level. The performance of individual students can be compared to the average performance of all students in Australia.

A NAPLAN report will be issued by your school later in the year. If you do not receive a report, you should contact your school.

ACARA does not recommend the use of services by coaching providers or excessive preparation. NAPLAN is not about passing or failing, but about assessing learning progress.

Participation in NAPLAN

All students in Years 3, 5, 7 and 9 are expected to participate in the annual NAPLAN tests.

Students with disability may qualify for adjustments that reflect the support normally provided for classroom assessments. A formal exemption may be granted for a student with significant intellectual disability and/or significant coexisting conditions, or for a student who has recently arrived in Australia and has a non-English speaking background.

Your school principal and your local test administration authority can give you more information on special provisions or the process required to gain a formal exemption.

Will my child sit NAPLAN on paper or online?

Your child will sit the NAPLAN paper tests in 2018.

However, children in some other schools across Australia may sit the NAPLAN online tests this year. Federal, state and territory education ministers have agreed that NAPLAN will move online over the next two to three years. State and territory education authorities will determine when their schools move online.

As students are presented with questions that test the same range of difficulty, regardless of whether they complete the test online or on paper, results for both formats will be reported on the same NAPLAN assessment scale.

To find out more about NAPLAN Online, visit nap.edu.au/online-assessment

How are NAPLAN test results used?

- Students and parents may use individual results to discuss progress with teachers.
- Teachers use results to help them better identify students who require greater challenges or additional support.
- Schools use results to identify strengths and weaknesses in teaching programs and to set goals in literacy and numeracy.
- School systems use results to review programs and support offered to schools.
- The community can see average school NAPLAN results at myschool.edu.au

Where can I get more information?

For more information about NAPLAN:

- contact your child's school
- contact your local test administration authority at nap.edu.au/TAA
- visit nap.edu.au

For information about how personal information for NAPLAN will be handled by ACARA, please visit nap.edu.au/naplanprivacy

The Mix Social Skills Program FREE School holiday event

Communities for Children and Asperlutely Autisme are excited to present The Mix North school holiday event. The Mix is a social skills development program for children with autism and their siblings. Age range: 9 to 12 years.



Go DRAWING MAD this holidays as Toonworld invites you to come on a journey filled with creativity and challenges where you will meet fun characters and we will design our own wonderful heroes while defending the lands against the evil Rubbix and his rampaging stickmen army!

Tuesday 24 April
10am – 11.30am

Venue
The Platform,
73 Elizabeth Way, Elizabeth
(in the same building as Northern Sound System).

Please contact **Dana** for more information and to book in on **0417 081 051**

Lego Club North – FREE school holiday event

Thanks to Playford Communities for Children we are offering a Lego Club event in the school holidays. Children on the autism spectrum and their siblings have the opportunity to show their creativity and engage with others who enjoy Lego.

We supply a very large range of Lego for the kids to get creative. We ask that a parent or carer be present for the session. We provide snacks, water and coffee/tea.

The most appropriate age group is 5 to 12 years, but we welcome older children with an interest in Lego, and younger children can play with Duplo under parent supervision.

Friday 27 April
10am to 12 noon

Venue: The Platform, 73 Elizabeth Way, Elizabeth
(in the same building as Northern Sound System).

Please contact **Dana** for more information on **0417 081 051**



Family services
Children's services
Youth services
Aged services

SERVICES EXPO AND FAMILY FUN DAY

There will be giant games, activities, entertainment, a bouncing castle, face painters, barbecue lunch, giveaways & something for the whole family!

AND IT'S ALL FREE!!!

THURSDAY APRIL 19TH
11AM TO 2PM
BURGATE ST RESERVE, FAIRFIELD RD
ELIZABETH GROVE.

ALL WELCOME
for more information contact
Aaron or Denise on 8409 3666

TRUE NORTH

FREE SCHOOL HOLIDAY PROGRAM

Thursday 26th and Friday 27th of April

What would you have in your treehouse?

Please note spaces are extremely limited and this is a 2 day workshop. no split bookings are permitted. Age strictly 6-12. Bookings via ajzproductions@hotmail.com or 0406 991 491.

Day 1 - Workshop

Come to a craft and drama workshop and discover the mysteries of your own personal treehouse!
please wear comfortable clothing and bring a drink and a snack
2-4pm @ The Platform - 71 Elizabeth Way, Elizabeth

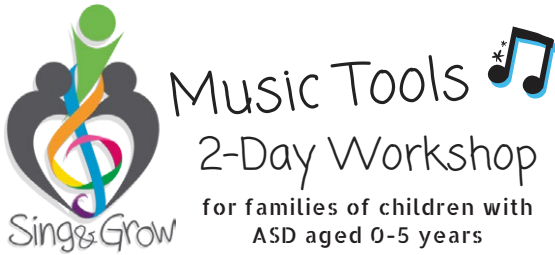
Day 2 - Excursion - Adelaide Festival Theatre

The 78-Storey Treehouse performance
11:30am drop off, 3:30pm pick up from the Platform
Please bring a packed lunch and a drink bottle

For more information about our program visit
www.truenorthyouththeatreensemble.com.au

Playford Communities for Children is funded by the Australian Government Department of Social Services

Community Information



Music Tools 2-Day Workshop for families of children with ASD aged 0-5 years

This dynamic 2-day workshop is to help families share and build skills around how music can be used in early intervention to assist very young children in the process of being diagnosed, or who have a diagnosis of ASD.

**Tuesday 17th & Friday 20th April
10:00AM-11:30AM**

The **Tuesday** workshop is a skills-building workshop for parents-only and a creche will be provided.

The **Friday** workshop is for parents with their children aged UNDER 6 years. On the Friday a creche will be provided for children aged 6 years and older.

To register, parents must be able to attend both days.

Places are limited, to register please call Anna at CfC on 8209 5753

The workshop will be held at The Platform, 73 Elizabeth Way.

playford
communities for
children

Communities for Children is funded by
the Australian Government
Department of Social Services.

ANGLICARESA

STARPLEX

GUEST
COACHES
Central
Districts
Premier League
Player Imports!

inclusive

SPECIAL
GUEST
Kevin
Brooks
Former NBA
player &
Adelaide 36ers
Assistant Coach

ONE DAY ONLY

SPORTS & ACTIVITIES
FOR ALL ABILITIES & AGES

BASKETBALL

SKILLS TRAINING
3X3 or 5X5
TEAMS

NETBALL

SKILLS TRAINING
FUN & SOCIAL

FUTSAL

SKILLS TRAINING
3X3 or 5X5
TEAMS

BOWLING

FUN SOFT PLAY

BADMINTON

SKILLS TRAINING
USING RACQUET &
SHUTTLE

GYMNASTICS

BALANCE BEAM
TUMBLING
& MORE!

PARACHUTE

EXCITING
ACTIVITY TIME!

TUESDAY 24th APRIL

4 HOURS
10AM - 2PM
(1 HOUR FOR LUNCH)

ALL THIS FOR ONLY

\$15

PER PARTICIPANT

BBQ LUNCH INCLUDED

BOOK ONLINE TODAY

www.trybooking.com/UZDN

STARplex COURTS
PHONE 8522 0657

www.starplex.com.au



OBSTACLE

CHALLENGE

Challenge yourself on the course set out by the team from SA Base Camp. How many laps can you do of their mega course?

Tuesday 17th April

choose one of 6 sessions

#1- 10:00am-10:50am

#2- 11:00am-11:50pm

#3- 12:00pm-12:50pm

#4- 1:00pm-1:50pm

#5- 2:00pm-2:50pm

#6- 3:00pm-3:50pm

Blakeview Primary School Oval

Omega Drive, Blakeview

All Children **MUST** be supervised by a
parent or guardian at all times

To book please call the
Playford Communities for Children
team on 8209 5754

Playford Communities for Children is funded by the Australian
Government Department for Social Services



playford
communities for
children

ADELAIDE
children's
UNIVERSITY
A MEMBER OF CHILDREN'S UNIVERSITY AUSTRALIA

ANGLICARESA